



PORTFOLIO

BY QIE JINRAN

CHAINS

INTRODUCE

Chain as one of the basic elements of jewelry, it is enduring. However, it is a boring and repetitive industrial product. My work analyzed the unit-shaped parts of the chain, disrupted and reorganized the combination form of the chain, transformed the original state of the chain, broke its "industrial sense", and found a new visual language and features.



<Chain-1>

Category: Brooch

Material: Brass, Resin

Size: 8cm*7cm

<Chain-2>

Category: Brooch

Material: Brass,Resin

Size:10.5cm*6.5cm





<Chain-3>

Category: Brooch

Material: Brass,Resin

Size: 8cm*7cm



<Chain-4>

Category: Brooch

Material: Brass, Resin

Size: 8cm*8.5cm



<Chain-5>

Category: Brooch

Material: Brass, Resin, Acrylic

White, brass

Size: 14cm*4cm





RECEIPTS

INTRODUCE

Take-out receipts are often overlooked. They are often discarded, but they are marked with a lot of important information, such as a person's tastes, likes and dislikes. The take-out receipt is like the love of family, which is often overlooked, but it is an important presence on the road of growth.



给女儿

* #1 立秋 微信关怀

Nancy 王

— 已在线支付 —

送达时间: 立即送达

时间: 2020-8-6

编号: 20208652013847865600

注: 天气冷了, 女孩

注意自己的身体





MIRROR

INTRODUCE

Mirror itself exists two kinds of meaning□ The first kind is the meaning that has use property, the 2nd kind is the meaning that others endows a mirror. The former helps people get dressed and look good. The latter is the image of the literati expressing their feelings and introspection. My works explore the relationship between mirror and dress up. By combining bronze mirror and headdress in ancient China. Use the mirror to make be like real unreal, be like the characteristic that has no real, found new visual language and function function for them respectively.



<Mirror-1>

Category:

Brooches

Material: brass

Size: 10*10cm



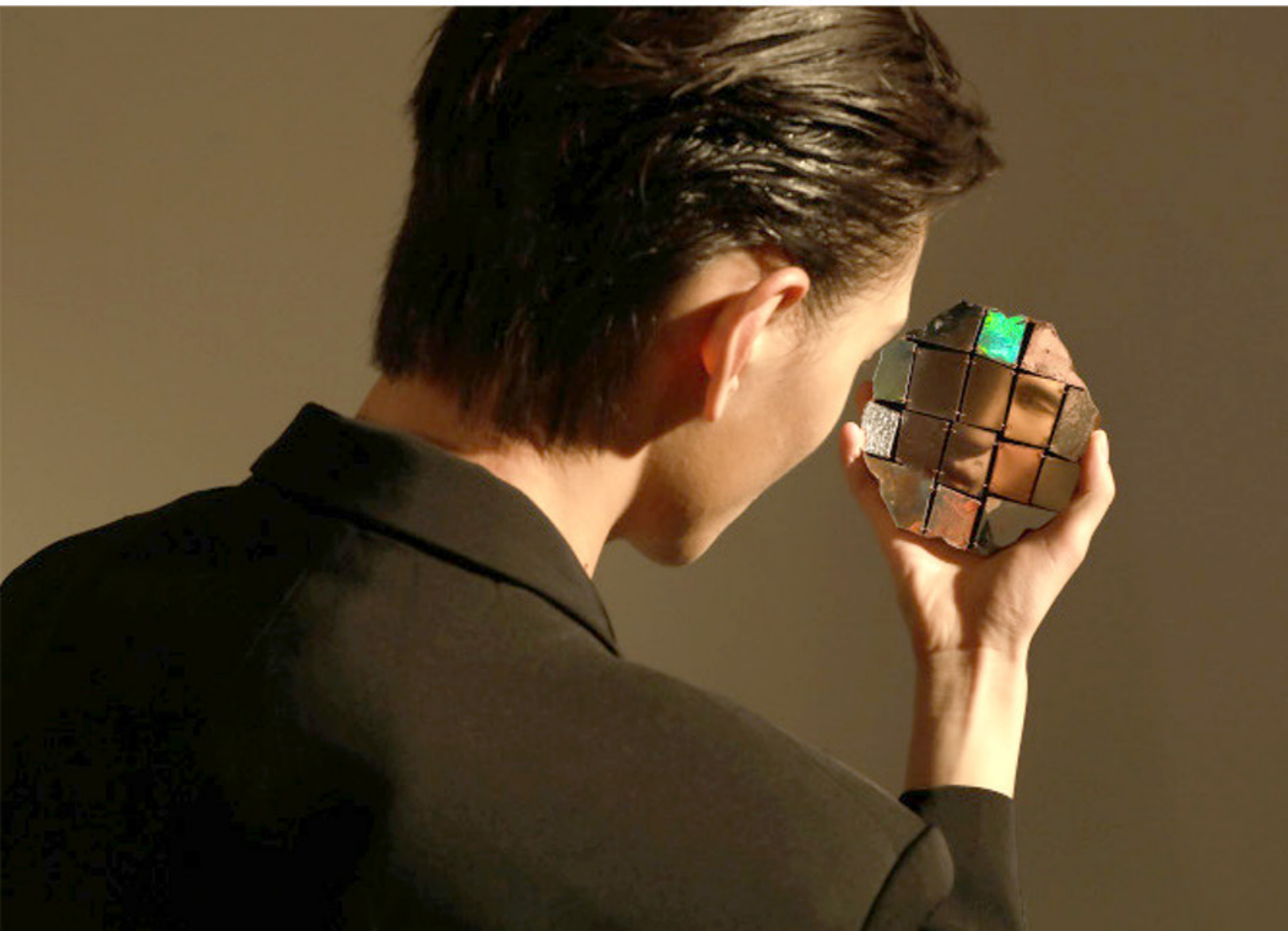


<Mirror-2>

Category: Hang decorations

Material: brass

Size: 24cm*10cm

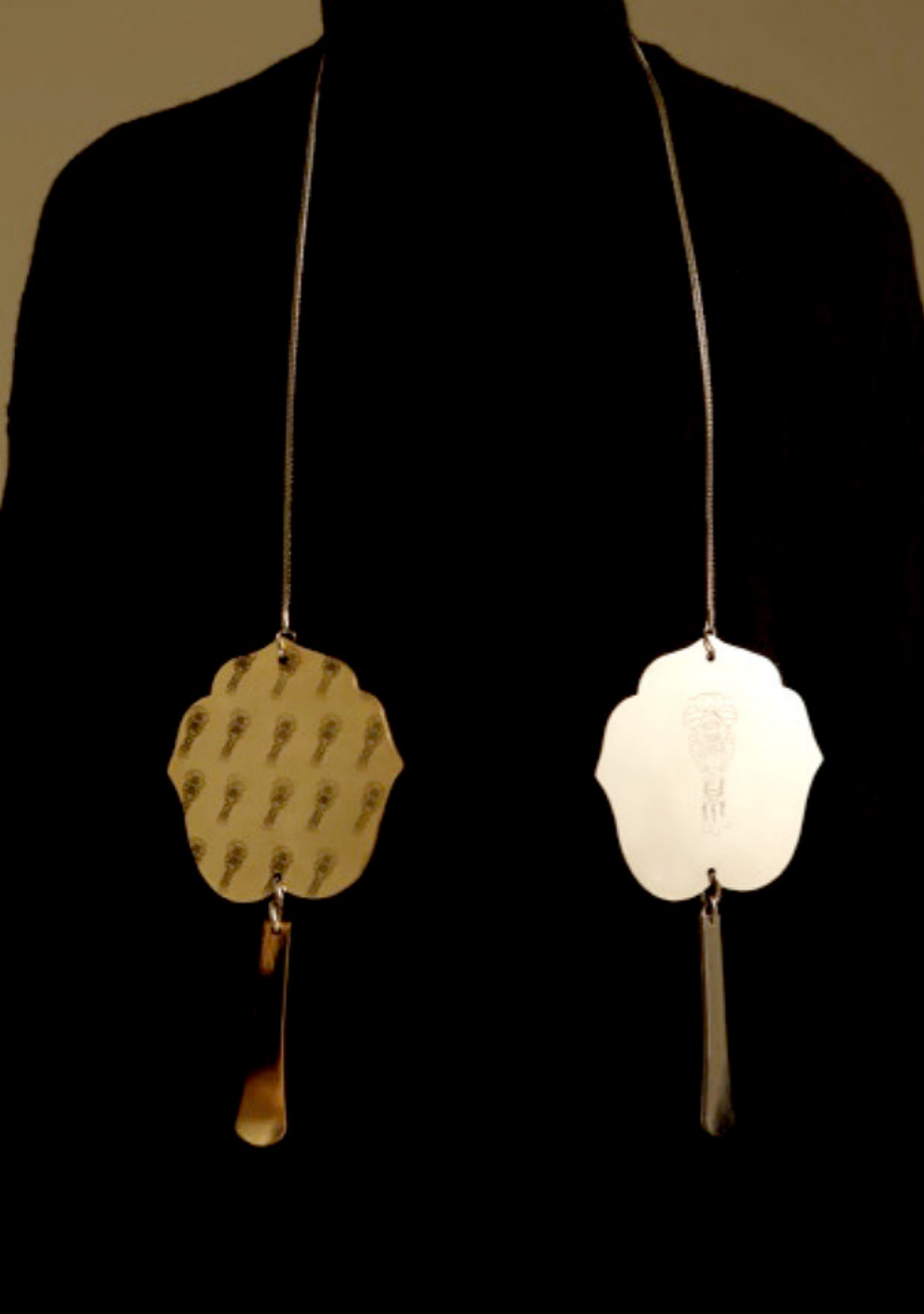


<Mirror-3>

Category: Object

Material: resin, brass, Copper,, Iron, Stainless Steel,
Mirror Paper, Laser Paper, Silver, Tin Foam.

Size: 12*12cm



<Mirror-4>

Category: Necklace

Material: Brass, Aluminum

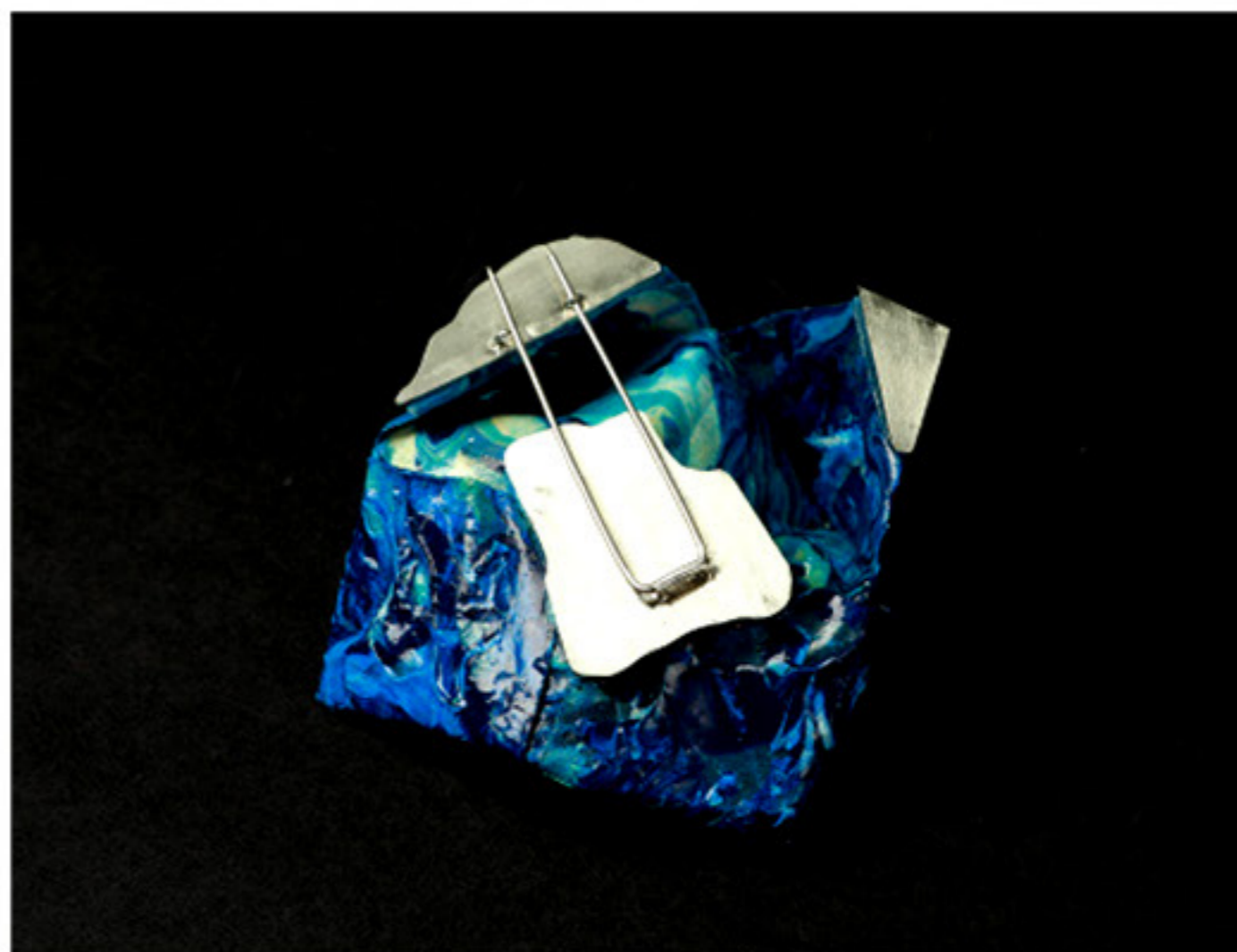
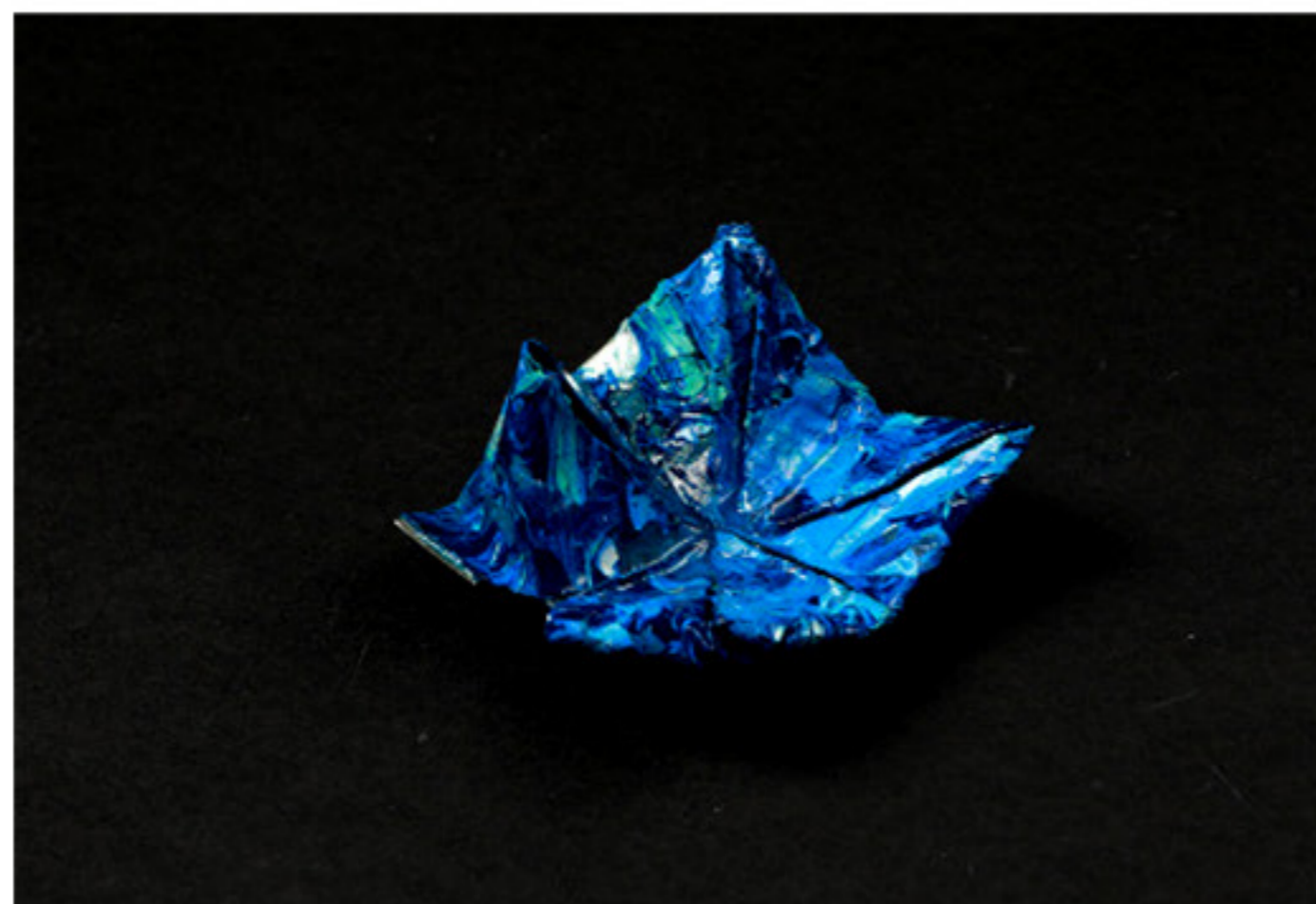
Size: 21cm*10cm



AN ASSOCIATION WITH AN AUDIO CLIP

INTRODUCE

This work started from two audio clips I made in my sophomore year. The whole series is an extension of my previous works. They are related in a sense, but different from each other. This series of works presents my fear and speculation of the unknown. People's fear of the unknown is not because of its "unknown", but because they know part of the truth, but do not know the truth of the other half. The fear of this unknown feeling is just like that we cannot control where the paper airplane will fly when it is taken away from us. I visualized these abstract feelings and turned them into concrete objects.



**<East, south, west,
north>**

Category: Brooch

Material: WhiteBrass, Rice paper

Size: 7cm*7cm



<Paper plane>

Category: Brooch

Material: silver, Brass, Rice paper,

Size: 11cm*8cm



<Hornet's nest>

Category: Brooch

Material: silver, Brass, Rice paper,

Size: 11cm*8cm